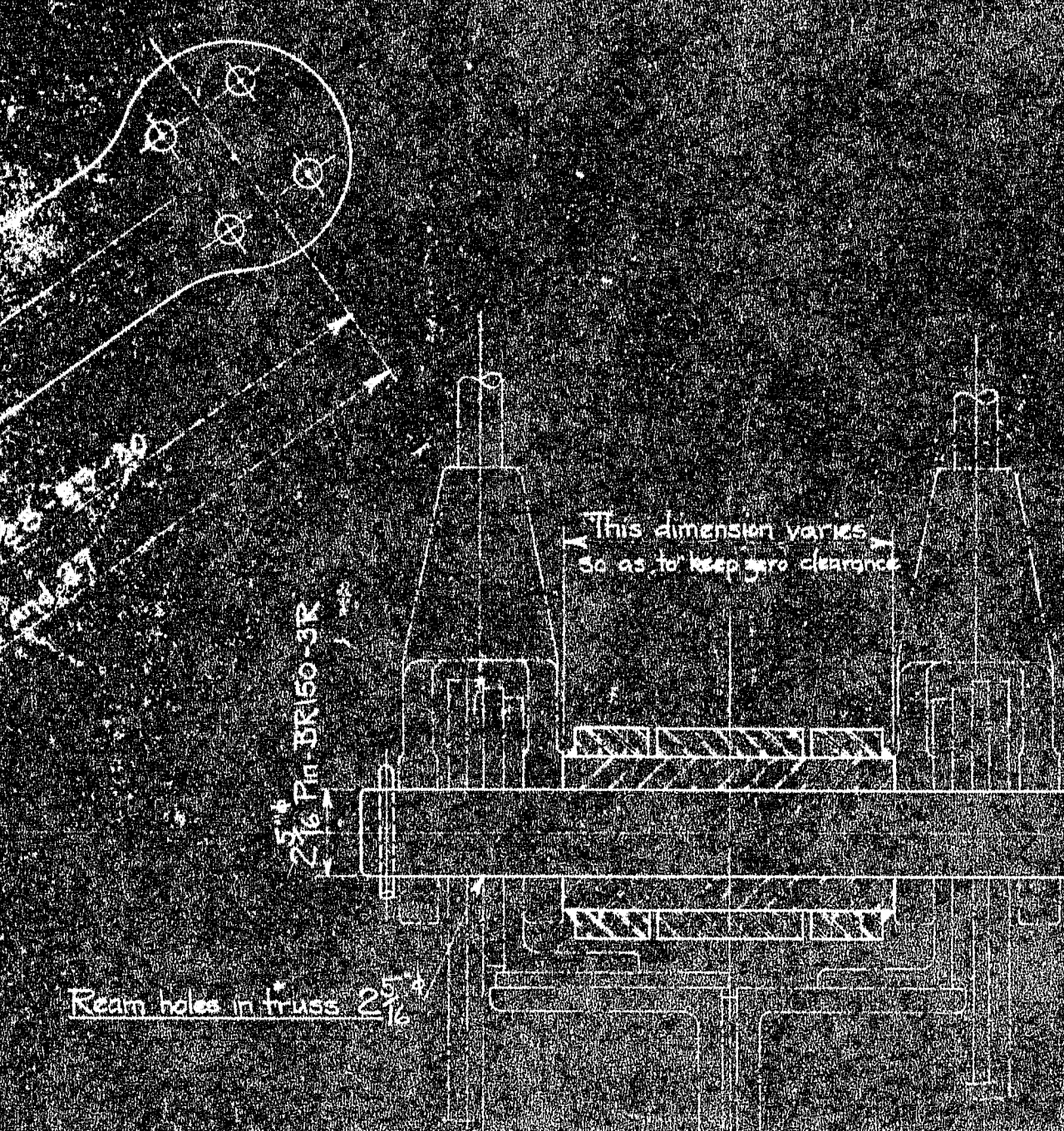
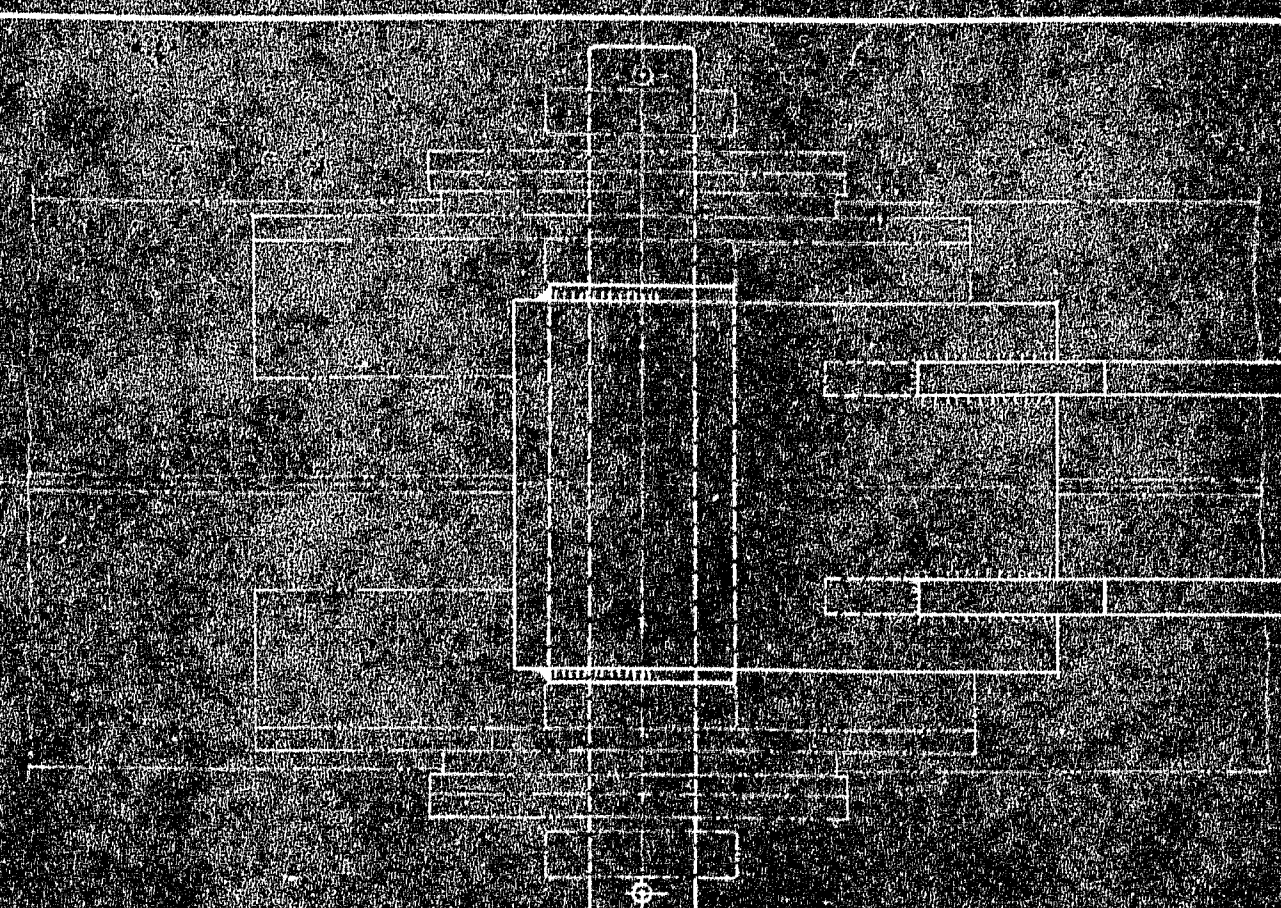


Side Plate Assemblies
BR150-7A
BR150-7B
BR150-7C
BR150-7D
BR150-7E
BR150-7F
BR150-7G
BR150-7H
BR150-7I
BR150-7J
BR150-7K
BR150-7L
BR150-7M
BR150-7N
BR150-7O
BR150-7P
BR150-7Q
BR150-7R
BR150-7S
BR150-7T
BR150-7U
BR150-7V
BR150-7W
BR150-7X
BR150-7Y
BR150-7Z

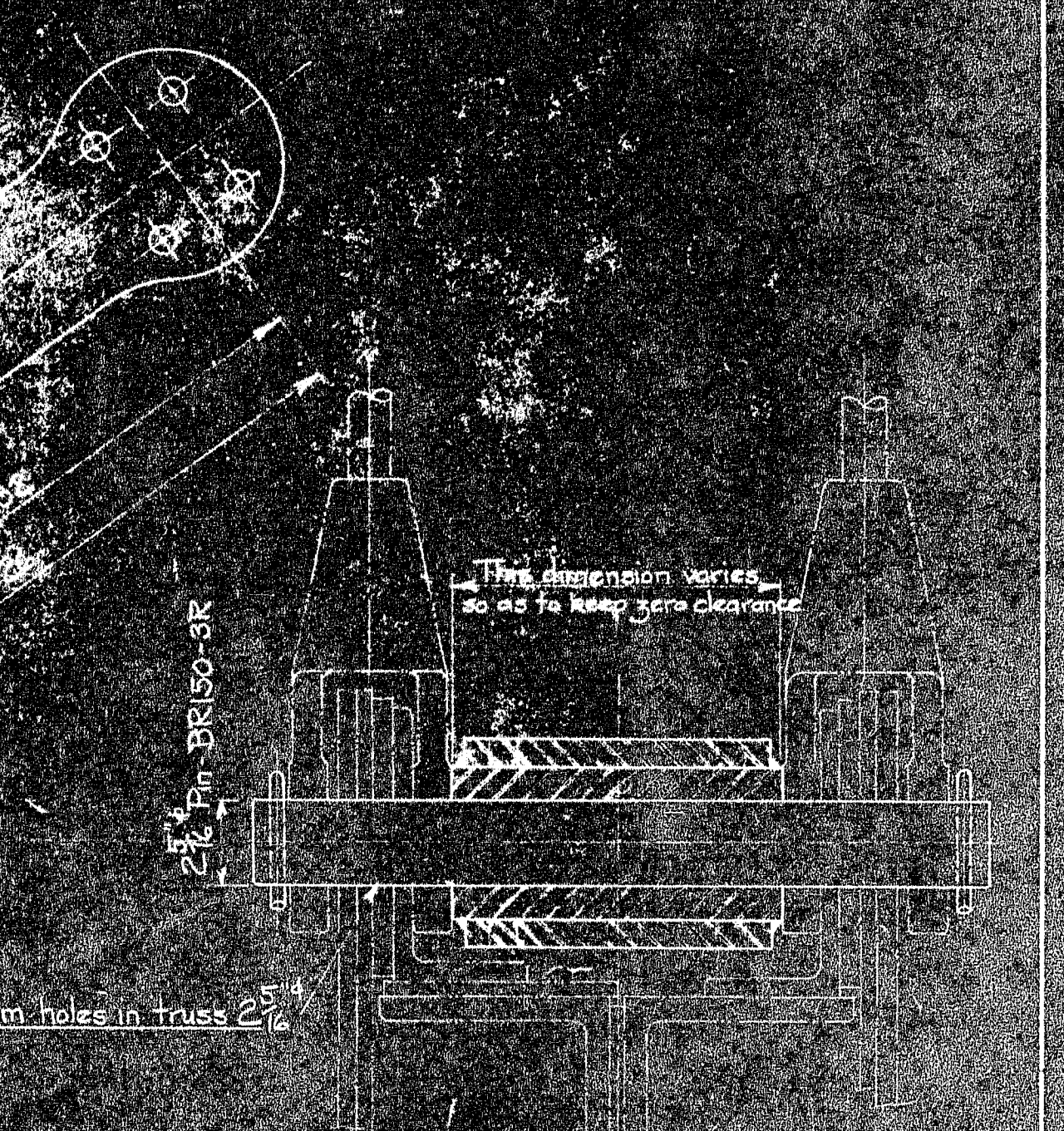


SECTION AA

ELEVATION
LONGITUDINAL STAY TRUSS CONNECTION AT PANEL POINTS 4-5-6-7-27-28-29 and 30

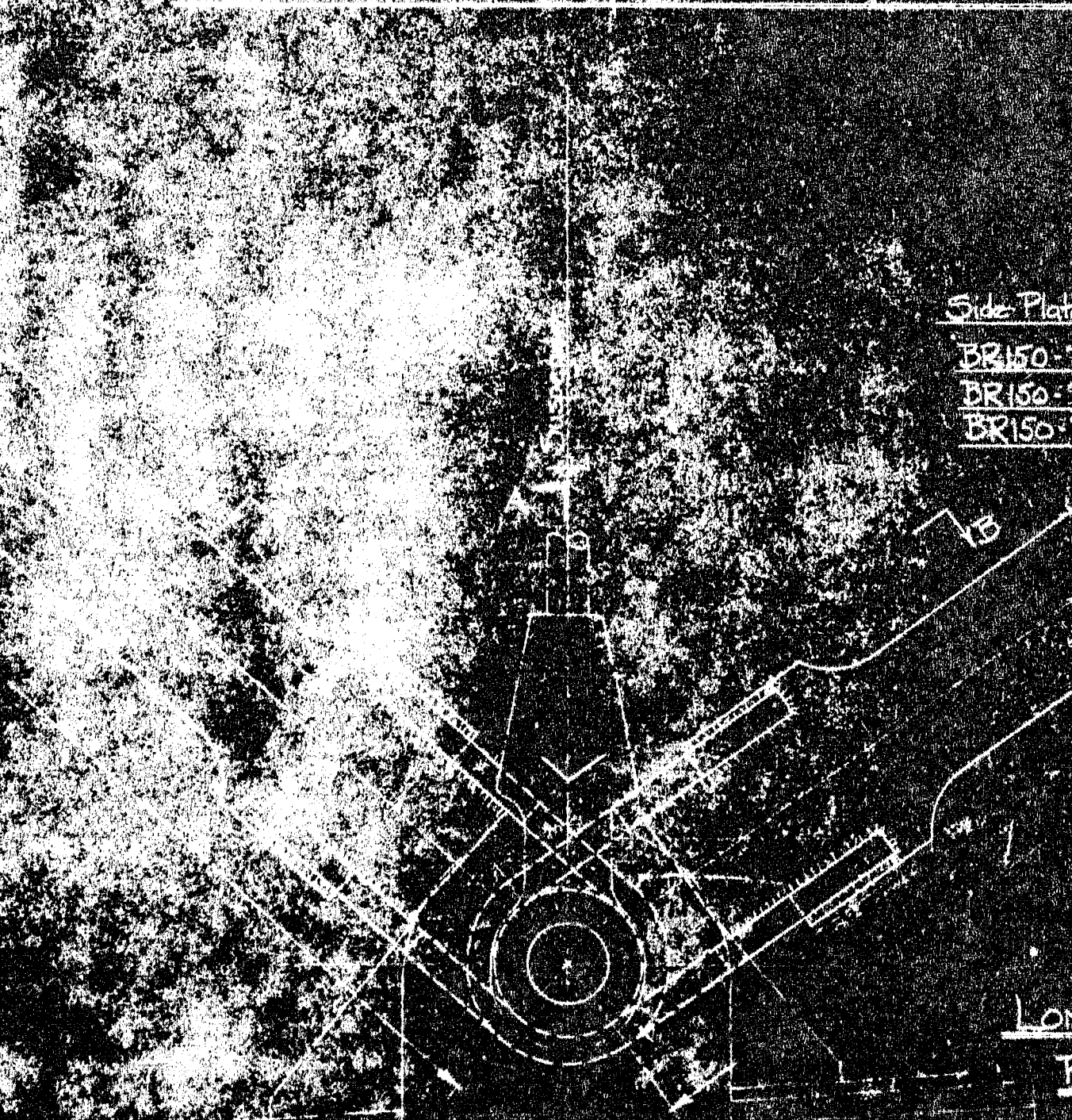


Side Plate Assemblies
BR150-7A
BR150-7B
BR150-7C
BR150-7D
BR150-7E
BR150-7F
BR150-7G
BR150-7H
BR150-7I
BR150-7J
BR150-7K
BR150-7L
BR150-7M
BR150-7N
BR150-7O
BR150-7P
BR150-7Q
BR150-7R
BR150-7S
BR150-7T
BR150-7U
BR150-7V
BR150-7W
BR150-7X
BR150-7Y
BR150-7Z



SECTION CC

ELEVATION
LONGITUDINAL STAY TRUSS CONNECTION AT PANEL POINTS 2-3-8-26-31 and 32



Side Plate Assemblies
BR150-7C
BR150-7AA
BR150-7AB

LONGITUDINAL STAY TRUSS CONNECTION AT
PANEL POINTS 9-10-11-13-21-23-24 and 25

MARK	REQ'D	MAT'L	REQ. NO.	NAME	REMARKS
BILL OF MATERIAL					
JOHN A. ROEBLING'S SONS CO., TRENTON, N. J.					
DEER ISLE BRIDGE REINFORCEMENT					
ASSEMBLY OF TRUSS CONNECTION					
FOR LONGITUDINAL STAYS					
BR150-11	Assembly of Longitudinal Stays				
BR150-7	Details of Truss Connection				
BR150-3	Side Plate Detail				
DWG. NO.	TITLE	SCALE	SERIAL	SHEET	
	REFERENCE DRAWINGS				

